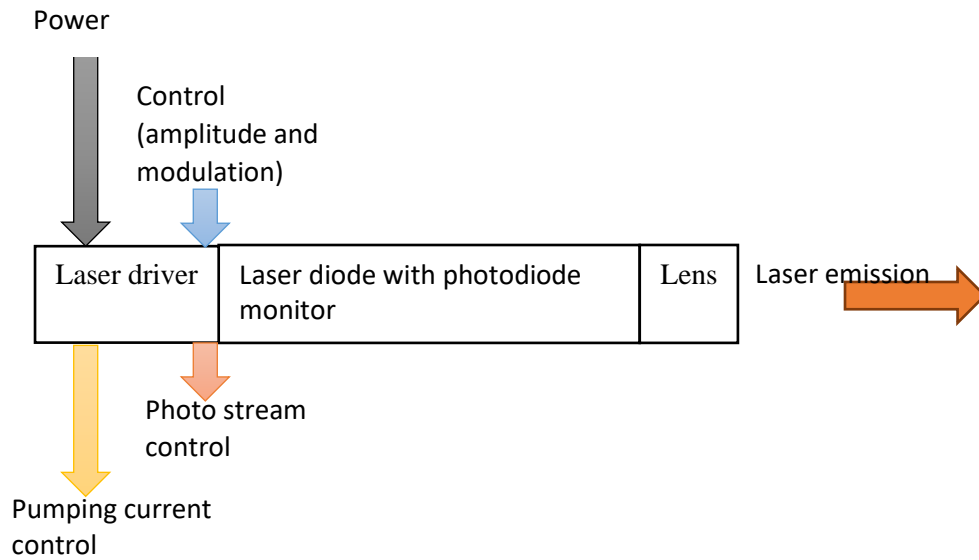


# Laser module for singlemode laser diodes

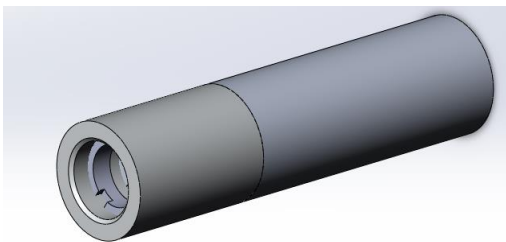
## General scheme



## Preliminary technical parameters

| Parameter   | Value              |
|---|--------------------|
| Power voltage   | +3...+5V           |
| Current consumption   | < 0.5A             |
| Maximum laser pumping driver current                                | 120mA              |
| Maximum optical power   | 20mW               |
| Pumping mode  | CW; pulsed         |
| Duration of the on and off fronts                                   | 1-10mks            |
| Maximum modulation frequency  | ~10-100kHz         |
| Resistance of the feedback photodiode photo stream control resistor | 100hOm             |
| Divergence of laser radiation                                       | <1mrad             |
| Wavelength  | 1550±30nm          |
| Radiation spectrum width  | < 10nm             |
| Dimensions  | ∅16mm, lenght 65mm |
| Temperature operation range   | +10...+40 °C       |

Laser module



Laser module horizontal mounting (optional):

